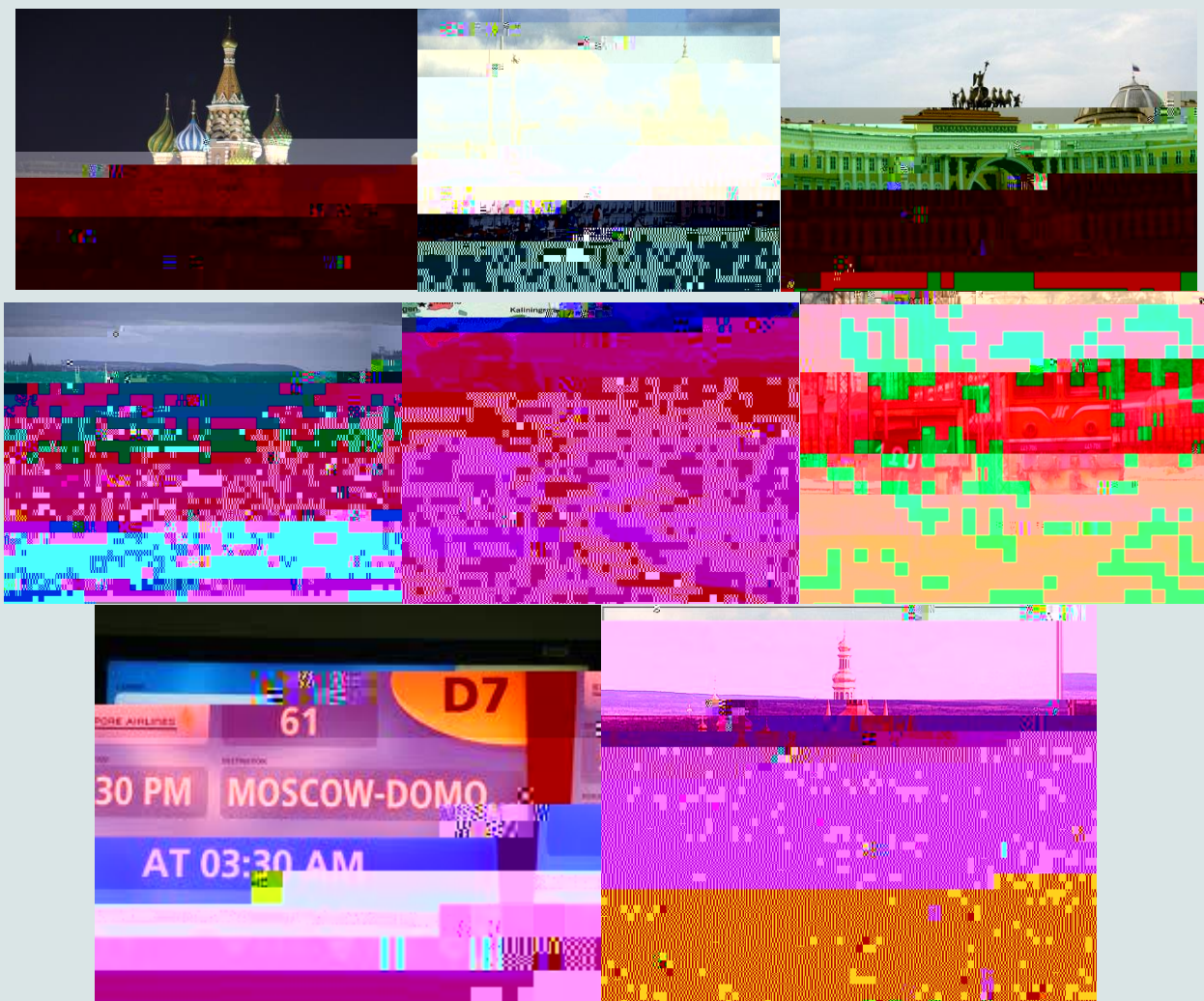


## SSEES YEAR-ABROAD HANDBOOK



1. Introduction .....	3
2. Preparing for your year abroad .....	3
3. Year abroad preparation – key dates for your calendars.....	4
4. Choosing where to go: your programme guides .....	5
4.1. Economics & Business programme (EBEES+YA) .....	5
4.2. Politics & Sociology programme (PEES+YA) .....	6
4.3. Languages & Culture programme .....	8
4.3.1. Central, Eastern and South-East European languages.....	8
4.3.2. Russian language.....	9
5. Waiving the year abroad.....	12
6. Failure to complete the year abroad (once it has begun) .....	12
7. Workload during the year abroad .....	13
7.1. Year-abroad workload for 2021-22 – overview.....	13
7.2. Year-abroad workload for students on BA EBEES + YA and BA PEES + YA programmes	13
7.3. Year-abroad workload for Russian Language & Culture students studying in Russia (at HSE or through RLUS).....	14
7.4. Year-abroad workload for all other Language & Culture students.....	14
8. UCL assessment – how to pass the year abroad .....	15
9. Costs, funding and finance.....	16
10. Selecting your year-abroad destinations: what to do next .....	17
11. What if I experience problems during my year abroad?.....	18
12. Key points of contact .....	19
KEY SOURCES OF INFORMATION (SUMMARY) .....	20

## 1. Introduction

Please remember: your year abroad is your responsibility and you should take ownership of it. You are responsible for knowing and adhering to the programme requirements of your year abroad.

---

## 2. Preparing for your year abroad

---

### i.

Key dates for your YA preparation are given in the calendar below. Please make a note of them in

## 4. Choosing where to go: your programme guides

### 4.1. Economics & Business programme (EBEES+YA)



	<hr/> <hr/>	
	<hr/>	





#### 4.3.2. Russian language

- 
- 

—

SSEES recommends the following year-abroad placements in Russia:

1. HSE St Petersburg - Language and Culture (L&C) placement

- 
- 
- 

Spring semester 2022 (18-week placements)

- 
- 
- 
- 

Autumn and spring semesters 2021-22 (full-year, 36-week placement)

- 
- 

PLEASE ALSO NOTE THE FOLLOWING AS YOU CONSIDER RUSSIAN











---

---

\*\*\*Transcript from host institutions:

9. Costs, funding and finance

---

---

i. Fees payable to UCL







support, intervention or help of UCL and/or SSEES, then please write to either the International Tutor or your Personal Tutor, as you prefer

SSEES International Tutor or to your Personal Tutor

12. Key points of contact



---

---

---

---