



Health justice partnerships in maternity and child health settings

Dr Sian Reece





Health impacts of deprivation

Poor physical and mental health

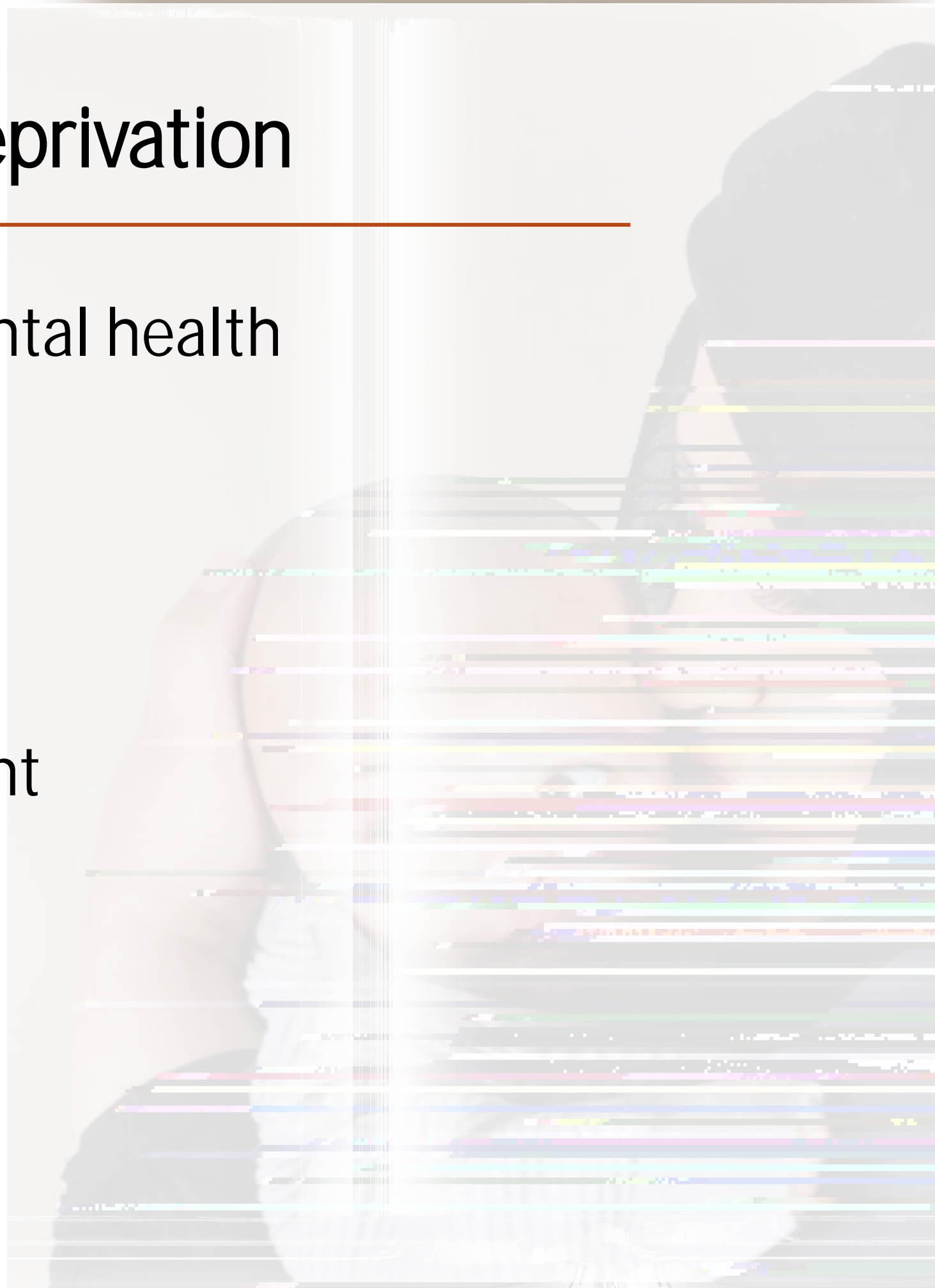
Child development

School readiness

Educational attainment

High risk behaviours

Youth crime



Health impacts of deprivation

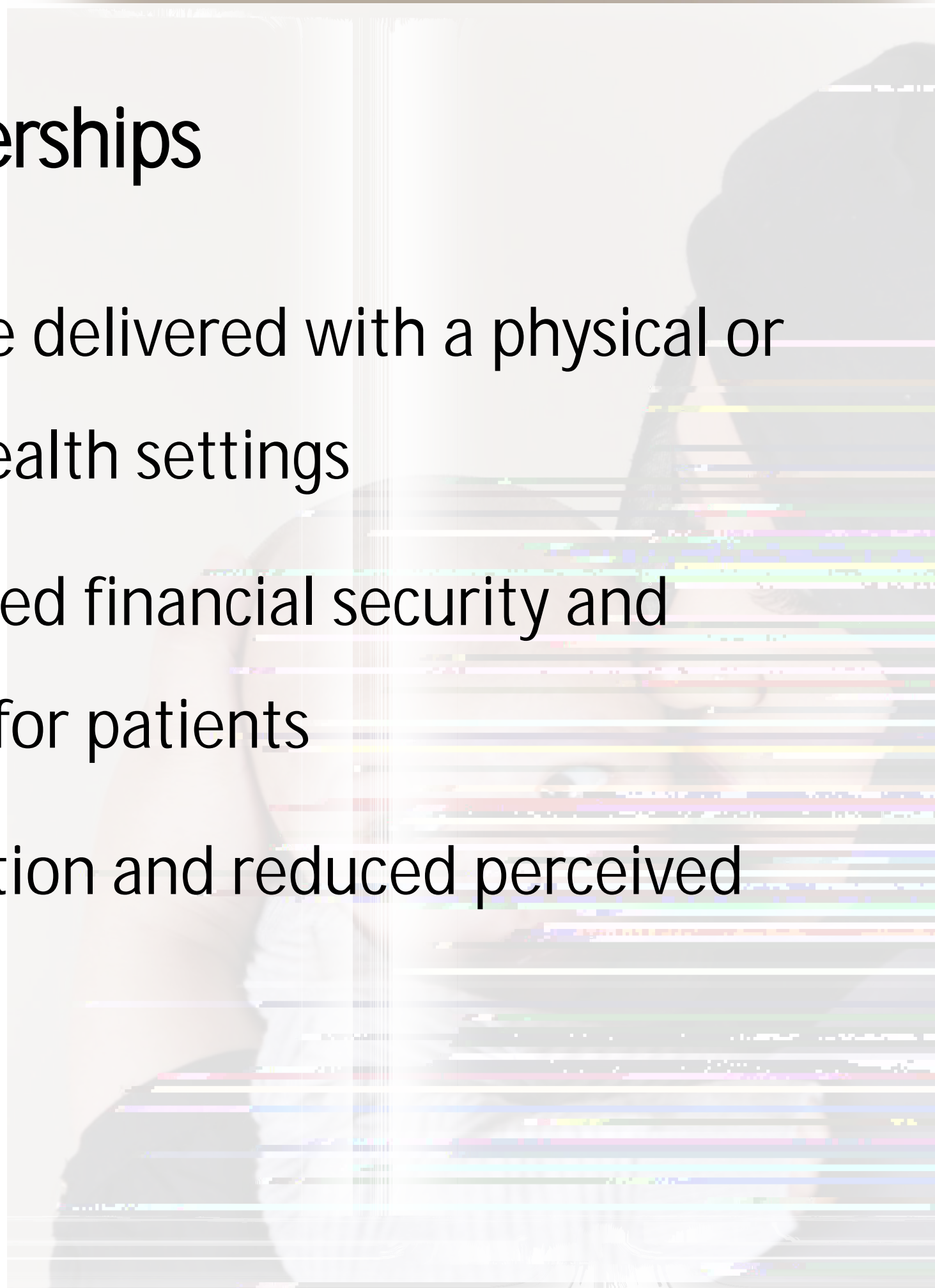


Health justice partnerships

Welfare advice service delivered with a physical or functional link with health settings

Demonstrable improved financial security and health and wellbeing for patients

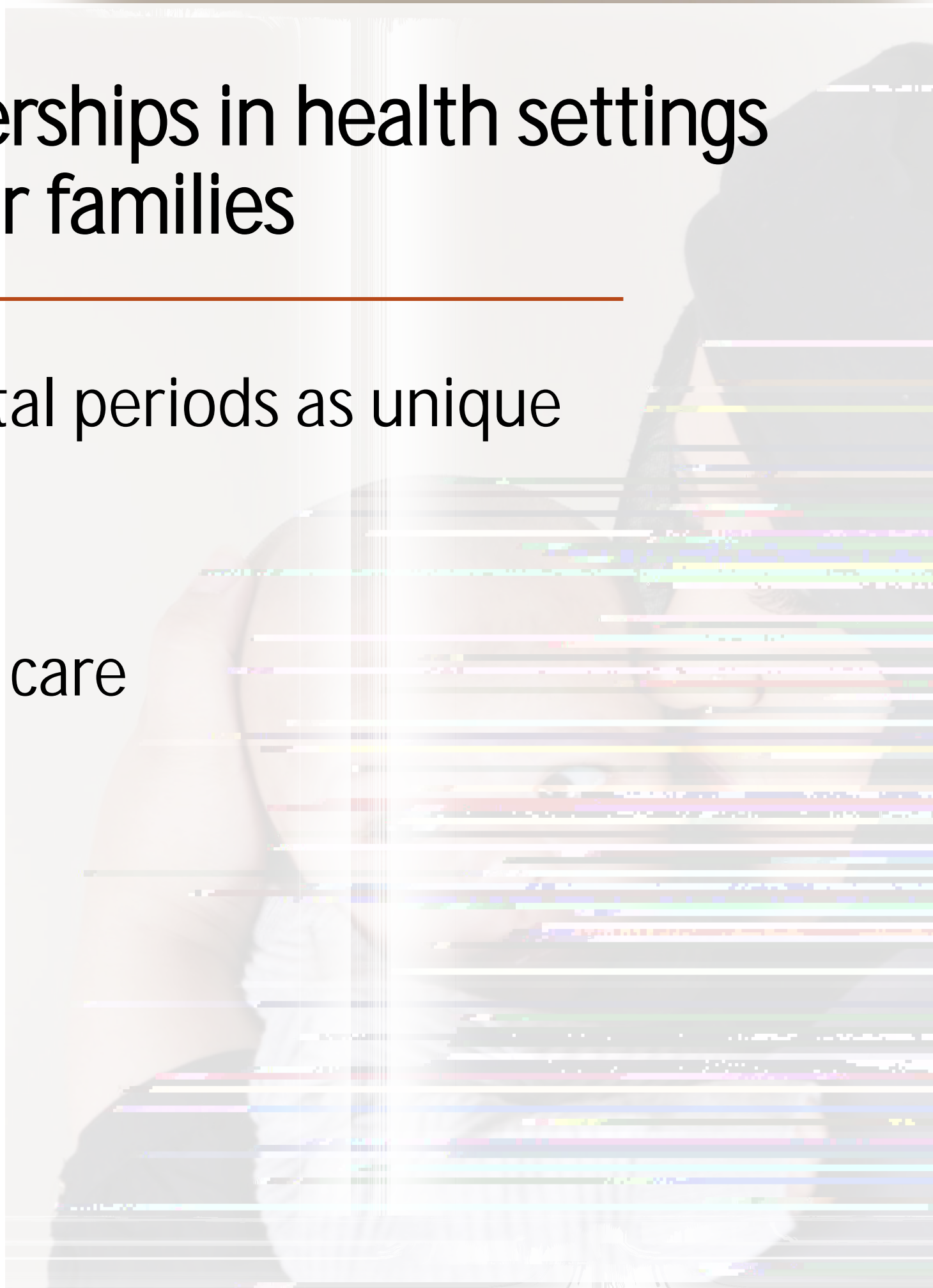
Improved job satisfaction and reduced perceived



Health justice partnerships in health settings for mothers and their families

Antenatal and postnatal periods as unique teachable moments

Universal provision of care

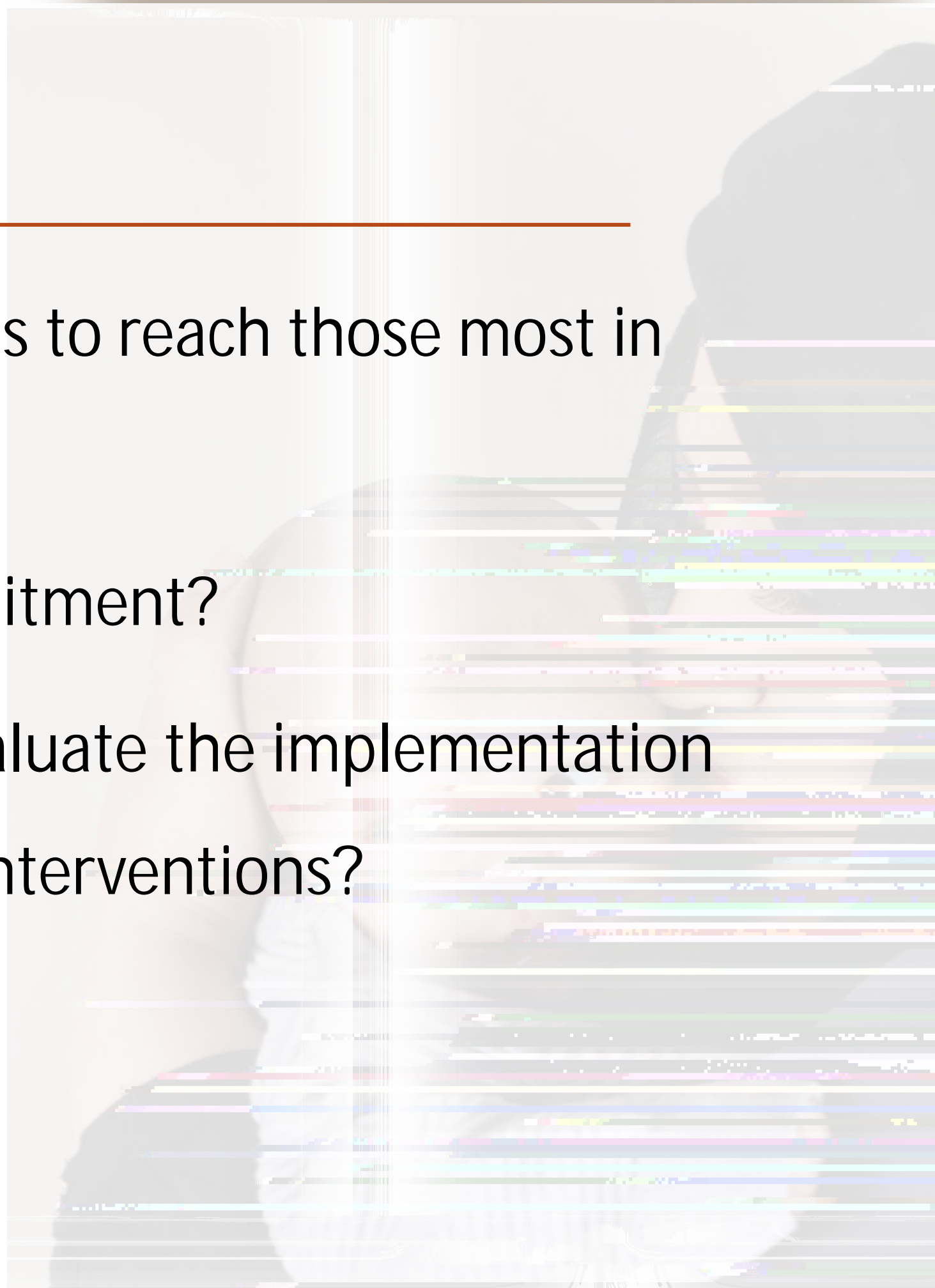


Challenges

How to design services to reach those most in need?

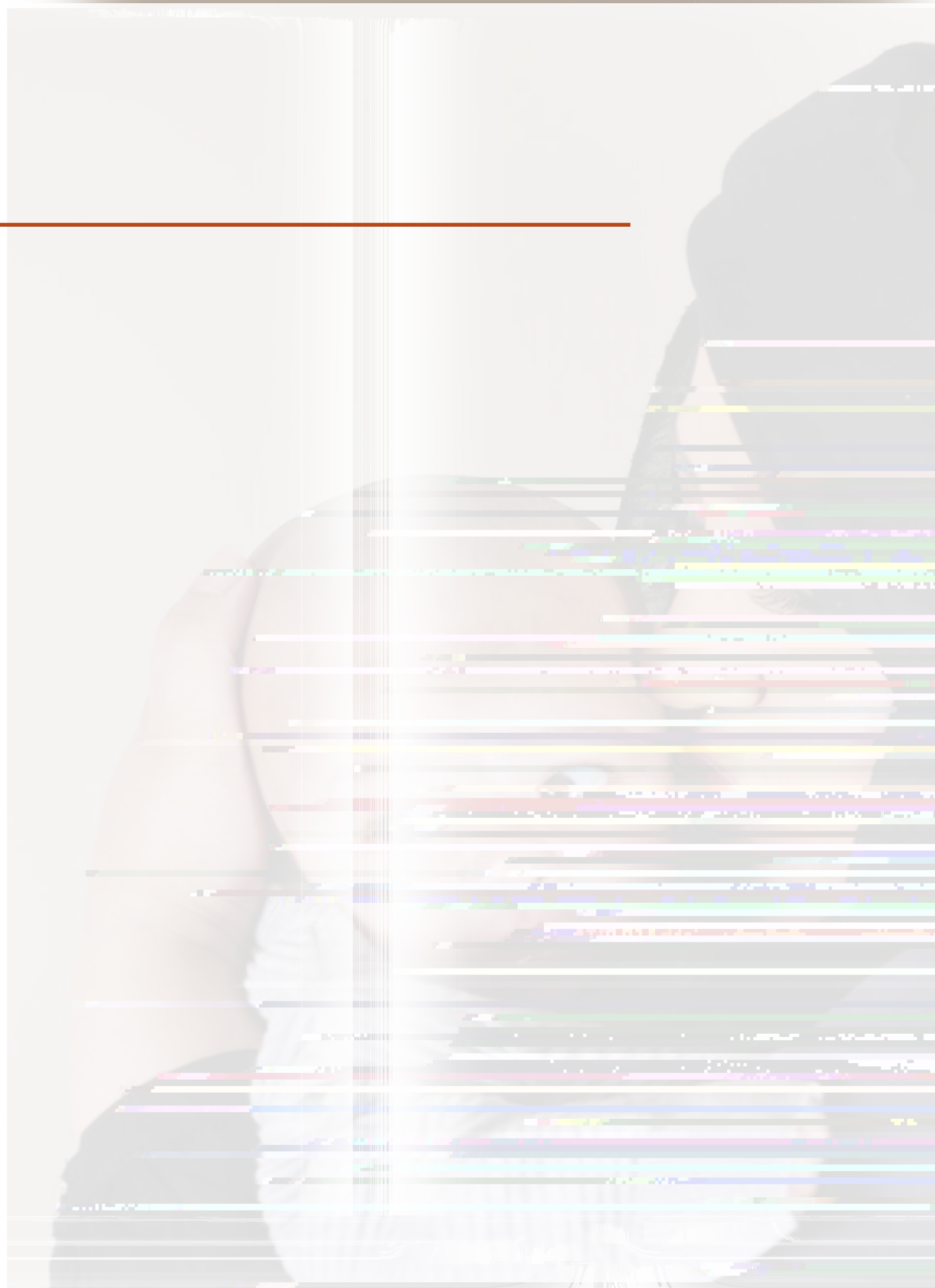
How to improve recruitment?

How to effectively evaluate the implementation and effectiveness of interventions?



References

1. Wickham S, Anwar E, Barr B, Law C, Taylor-



References

14. Allmark P, Salway S, Crisp R, R B. Ethnic minority customers of the Pension, Disability and Carers Service: an evidence synthesis. London: Department for Work and Pensions, 2010.
- 15.

