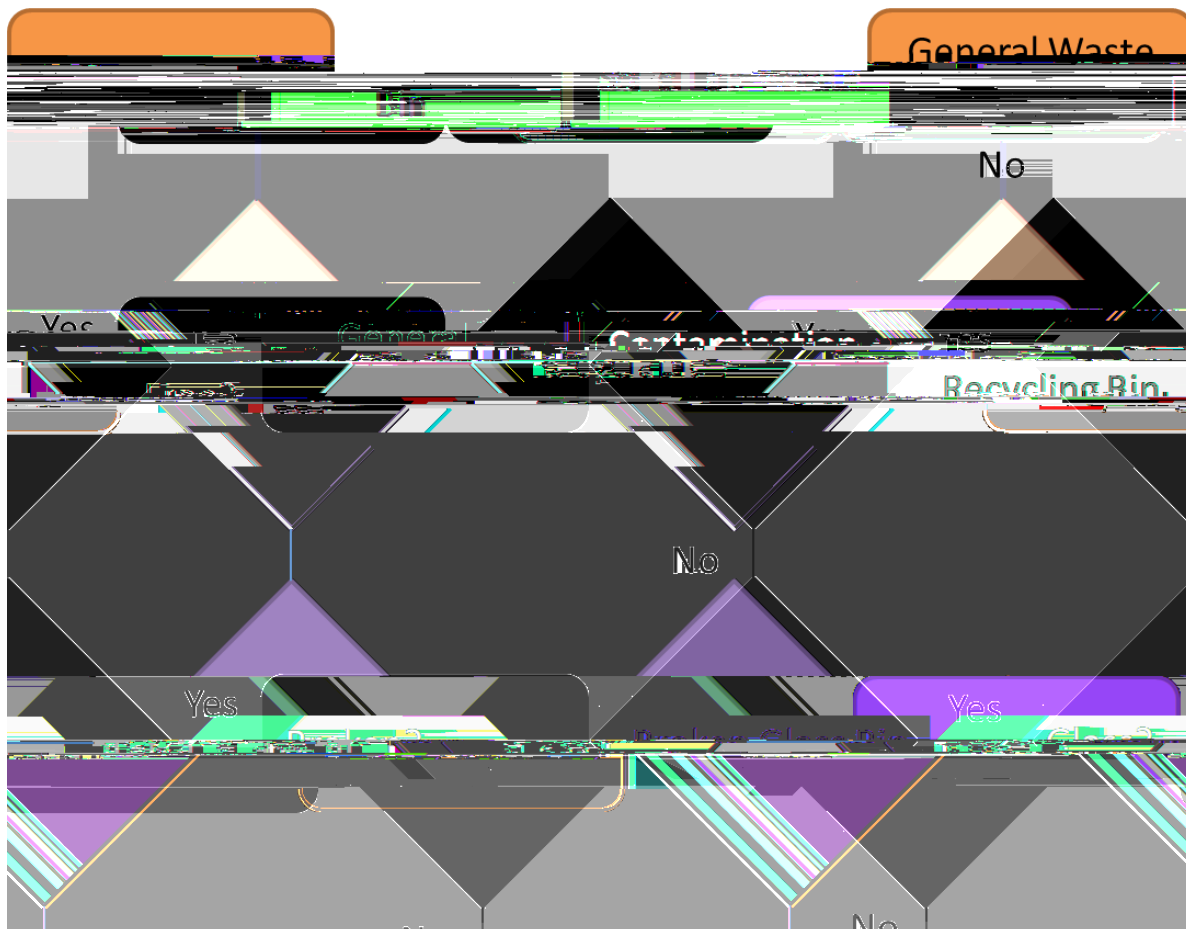
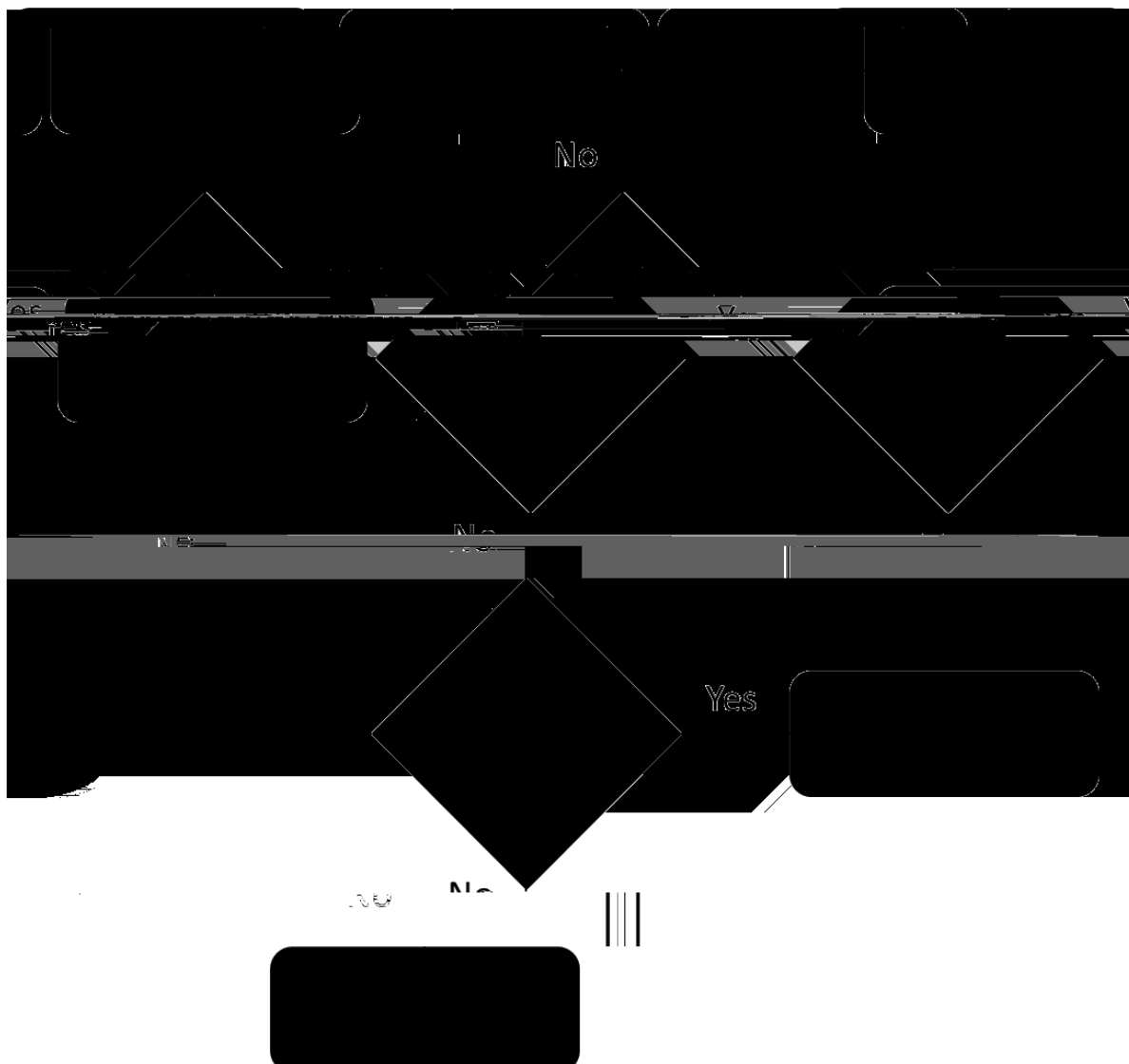


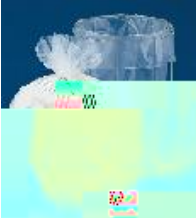


1. Scope.....	2
2. Waste Streams	3
2.1. General Advice.....	3
2.2. Recycling Bin	3
2.3. General Waste Bin	3
2.4. Hazardous Waste	3
2.5. Sharps Bins	3
2.6. Broken Glass Bins	4
2.7. Glass Recycling Bin	4
2.8. Low Risk Infected Waste Bins	4
2.9. Solvent Waste	4
2.10. Flammable Solvent Waste	4
2.11. Lab Smalls and Bulk Waste.....	4
3. Flow Charts.....	5
3.1. Solid Waste	5
3.2. Liquid Waste.....	6
4. Tables of Waste.....	7
4.1. Recycling	7
4.2. Solid Lab Waste.....	8
4.3. Liquid Lab Waste	9

Review Date: 09/21


This document details the waste streams available in the UCL Department of Chemical Engineering, what to use them for, and how to dispose of the waste. This information is summed up in a table at th





Disposal Method			
Cleaners /	Green Top Transparent Linings	Non-contaminated recyclable waste: e.g. waste paper, packaging	
Cleaners /	Black Top Blue Linings	Non-contaminated waste: e.g. polystyrene, non-recyclable plastic and metal	
Lab Users in green bin outside Darwin building /	Green Top	Empty bottles.	

Disposal Method			
/ Lab users in yellow bin outside Darwin building Key from DSO	Yellow Linings		

Disposal Method			
/ Lab users with DSO in red cabinet outside Darwin building	Labelled bottle Separated by chlorinated and non-chlorinated waste.	Chloro-solvents, Hydrocarbons, etc.	
/ Lab users with DSO in red cabinet outside Darwin building	Red metal can Separated by chlorinated and non-chlorinated waste.	Flammable waste solvent: Methanol / Ethanol, Benzene, Pentane, Ethers, etc.	