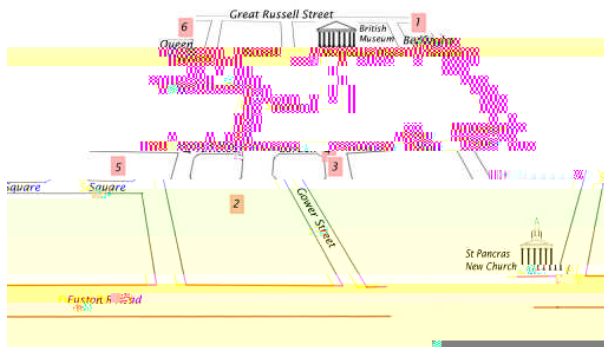
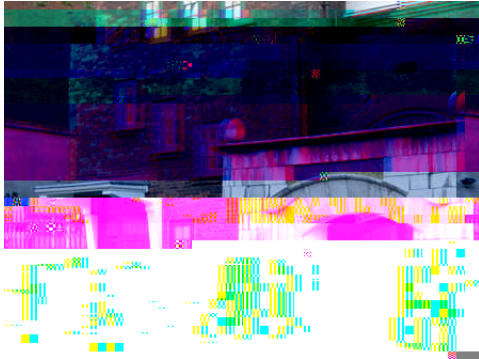


Historic Highlights in the Building of Bloomsbury



- 1 Ladies' College**
- 2 UCL**
- 3 University Hall**
- 4 Catholic Apostolic Church**
- 5 Passmore Edwards Settlement**
- 6 Female School of Art**

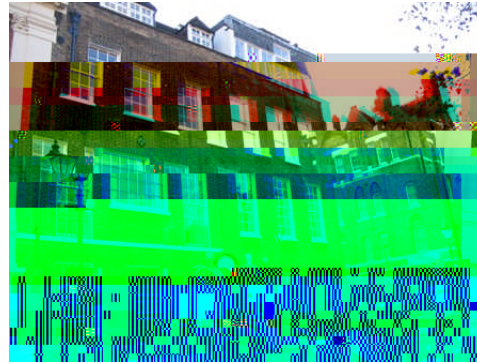
The walk begins at the original location of the Ladies' College, founded in Bedford Square in 1849 to offer higher education to women, and later to become Bedford College. A blue plaque commemorates the site. The College moved out in 1874 and merged with Royal Holloway College



Custom-built in Tavistock Place in 1897 by two young Bloomsbury-bred architects, Smith and Brewer, was the **Passmore Edwards Settlement**, now Mary Ward House (pictured above). Passmore Edwards, an uneducated self-made newspaper magnate, donated the money for this hall to organise play and learning sessions for Bloomsbury's poor children; in 1899 it opened the first school for disabled children in Britain. Architecturally significant for both aesthetic design and attention to the requirements of its intended use, it is a fine example of the best of Bloomsbury.

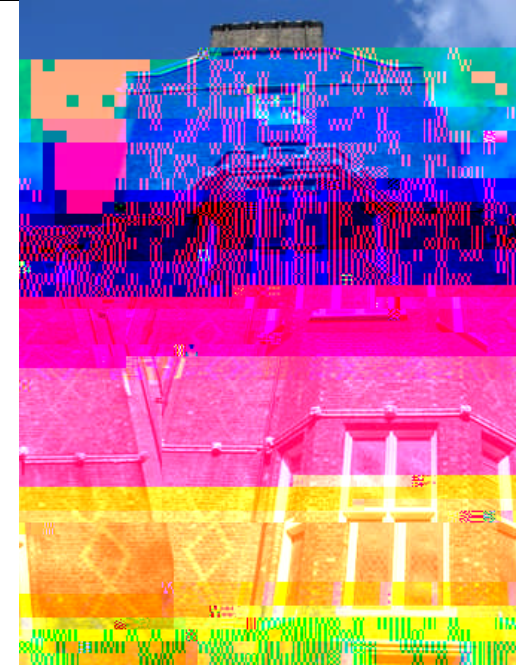
Retrace your steps to Woburn Place, and turn left towards Russell Square. Turn left again at Guilford Street and follow the pedestrian signs pointing you through to Queen Square on the right.

The final institution on this walk is the former Female School of Art in Queen Square (pictured below). Founded in 1812 to enable young women of the middle class to obtain an "honourable and profitable employment", it enjoyed considerable success later in the century, including royal patronage. The building in Queen Square is now the home of Mary Ward Centre, the successor of the Passmore Edwards Settlement.



Leaflet devised, written, and photographed by Rosemary Ashton and Deborah Colville, of the Leverhulme-funded UCL research project 'Bloomsbury and Reform in the Nineteenth Century'. For more information, see www.ucl.ac.uk/bloomsbury-project

This walk was created for the 2008 London Festival of Architecture.



Historic Highlights in the Building of Bloomsbury

